

Friends of Harlow Sculpture Collection

# Newsletter

August 2006

## Introduction from the Chair

I would like to introduce you to the latest Harlow arts organisation **Friends of Harlow Sculpture Collection (FHSC)**.

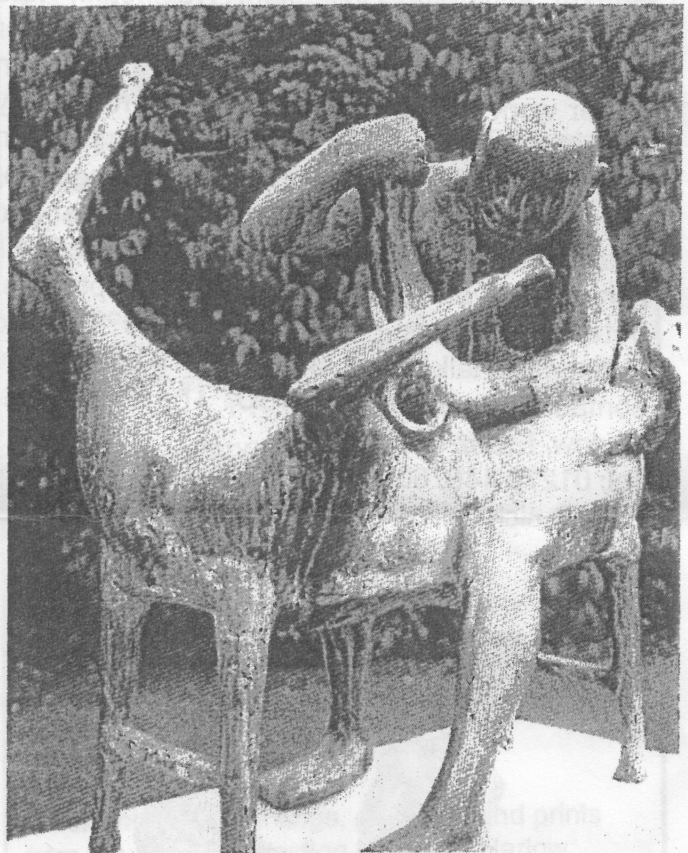
Harlow has one of the finest outdoor collections of sculpture in the country. The Harlow Art Trust pioneered the idea that sculpture should be part of the town's living environment. Harlow now has over 60 pieces of sculpture by such famous sculptors as Henry Moore, Barbara Hepworth and Elizabeth Frink.

FHSC was set up to support Harlow's sculpture collection. Prospective members identified the following ways in which they could help support the collection:

1. to provide information about the sculpture through talks, brochures and visits to museums and galleries.
2. to train guides to give tours of the sculpture collection.
3. to keep an eye on the condition of the collection, reporting any damage.
4. to promote the collection through special events.

So this is what we have now set out to do. If any of this interests you or you think it might be of interest to people you know then please join FHSC. Membership costs £5 for adults, £2 for the unwaged/students and £10 for organisations. Please fill out the application form on the back of this newsletter or contact Nick Bullions on 01279 446760 ext 241 or [nick.bullions@harlow.gov.uk](mailto:nick.bullions@harlow.gov.uk)

Jackie Storey



Sheep Shearer By Ralph Brown

### Committee Members

Jackie Storey - Chairman  
Jenny Lushington - Vice Chairman  
Simon Carter - Treasurer  
Barbara Burge - Secretary  
Jane Steer - Committee Member  
Lin Hilton - Committee Member  
Nick Bullions - Committee Member

We are still looking for volunteers for the roles of press secretary and events organiser. If you are interested please contact Nick Bullions on 01279 446760 ext 241 or [nick.bullions@harlow.gov.uk](mailto:nick.bullions@harlow.gov.uk)

# Friends Events and Activities

**Experience and Learning**  
**A Talk by Gerda Rubinstein**  
**Wednesday 20<sup>th</sup> September**  
**7.00pm – 8.00pm**  
**Gibberd Gallery**

With four sculptures sited throughout the town and more at the Gibberd Garden Gerda Rubinstein is the best represented sculptor in the Harlow Sculpture Collection. Rubinstein was born in Berlin but has been working as a sculptor in London since 1959. A retrospective exhibition of her work will be held at the Gibberd Gallery from 5th August – 14th October. In conjunction with this exhibition the FHSC have arranged for Gerda to give a talk titled 'Experience and Learning' on her life as a sculptor. The talk will take place on Wednesday 20th September between 7.00pm – 8.00pm at the Gibberd Gallery. The talk is free and to reserve your place contact Nick Bullions, FHSC, The Playhouse, Harlow, Essex CM20 1LS.  
Tel: 01279 446760 ext 241.  
E-mail: [nick.bullions@harlow.gov.uk](mailto:nick.bullions@harlow.gov.uk)



Two Black Girls by Gerda Rubinstein

**Tour Guide Training Sessions**  
**Sunday 13<sup>th</sup> August**  
**Sunday 20<sup>th</sup> August**  
**10.00am start (Allow up to two hours)**  
**Meet outside Harlow Civic Centre at 10.00am**

An important role of the Friends is to help people learn about the collection. Enquiries from groups wanting to be shown round the collection are received on a regular basis. Unfortunately at present we are unable to accommodate everyone. We are therefore running two free training sessions for friends interested in becoming tour guides. The first is on Sunday 13th August and is for those who would like to become tour guides for adult parties. The second session is on Sunday 20th August and is for friends who would like to become tour guides for school parties. You can, if you wish, attend both. To book please contact Nick Bullions, FHSC, The Playhouse, Harlow, Essex CM20 1LS. Tel: 01279 446760 ext 241.

E-mail: [nick.bullions@harlow.gov.uk](mailto:nick.bullions@harlow.gov.uk)

**Protecting Harlow's Sculpture Collection**  
**Monday 11<sup>th</sup> September**  
**7.00pm – 8.00pm**  
**Gibberd Gallery**

A free training session on protecting Harlow's sculpture collection, including the do's and don'ts of looking after sculpture. To book please contact Nick Bullions. (Contact details as above)

FHSC are happy to organise group visits to galleries and museums or arrange for guest speakers to talk in Harlow. If anyone has any suggestions for future events please contact Nick Bullions. (Contact details as above)

**If you would like to contribute an article or have any suggestions for future articles to be included in FHSC Newsletter please contact Nick Bullions. (Contact details as above)**



# Keeping an Eye on the Collection

As a friend the most important thing you can do if you live near a sculpture or pass one by on a regular basis is to keep an eye out for damage or vandalism. Sculptures sited in the open air are vulnerable and can get damaged and vandalised easily. If you see any signs of graffiti or damage to the plinth or base of a sculpture report it to Harlow Council's 'Our Town Team' who are responsible for keeping Harlow clean. They can be contacted on.

T: 01279 446655

E: [contact@harlow.gov.uk](mailto:contact@harlow.gov.uk)

(remember to title your e-mail 'Our Town')

Most but not all sculptures are on Harlow Council property; if you are unsure please contact a member of Harlow Council's Arts Development Team. They can be contacted on.

T: 01279 446760 ext 240 or 241

E: [nick.bullions@harlow.gov.uk](mailto:nick.bullions@harlow.gov.uk) [kelly.lean@harlow.gov.uk](mailto:kelly.lean@harlow.gov.uk)

Please note that the Water Gardens shopping development no longer belongs to Harlow Council. If you see signs of graffiti or damage to plinths or sculpture bases report it directly to the Water Gardens shopping complex. They can be contacted on.

T: 01279 453554

E: [beryl@watergardensharlow.co.uk](mailto:beryl@watergardensharlow.co.uk)

If you have reported damage or vandalism remember to keep an eye on the sculpture and make sure any repair work or graffiti removal is carried out.

On occasions the sculptures themselves will get damaged or stolen. If you spot this do not report it to the police but report it to a member of Harlow Council Arts Development Team who will report it to the police on your behalf. (Contact details as above)

FHSC will be running a training session in September to help you spot damage, graffiti etc. See events and activities section of this newsletter for more information.

## Exhibitions In Harlow

### A Trip to the Sea

6th July - 13th August

The Gallery at Parndon Mill

Paintings, Ceramics and Sculpture by Alison Veness, Jenny Cufflin, Charlotte Munck, and Naomi Vincent

### Gerda Rubinstein: Retrospective

5th August - 14th October

Gibberd Gallery

A retrospective of Dutch artist Gerda Rubinstein tracing her career as a sculptor from early experiments in casting firebrick to more recent figurative work.

### Abstract Expressionism

17th August - 24th September

The Gallery at Parndon Mill

Paintings by Harry Anderson

### Accumulation

28th September - 5th November

The Gallery at Parndon Mill

Painting by Julie Cooper

### The Graham Collection

28th October - 13th January 2007

An exhibition of paintings, drawings and prints from the private collection of former Harlow architect John Graham and his wife Britt.

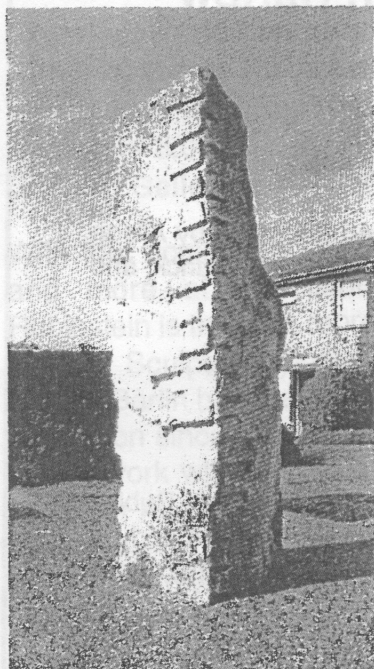
### Gallery Addresses

The Gallery at Parndon Mill, Parndon Mill,  
Harlow, Essex CM20 2HP  
[www.parndonmill.co.uk](http://www.parndonmill.co.uk)  
Tel. 01279 426042

Gibberd Gallery, Civic Centre, Water Gardens,  
Harlow, Essex CM20 1WG  
[www.gibberdgallery.com](http://www.gibberdgallery.com)  
Tel. 01270 446760 ext 240/1

# Forgotten Sculptures

## Stone Carving 1 and Stone Carving 2 by Menashe Kadishman



Stone Carving 1

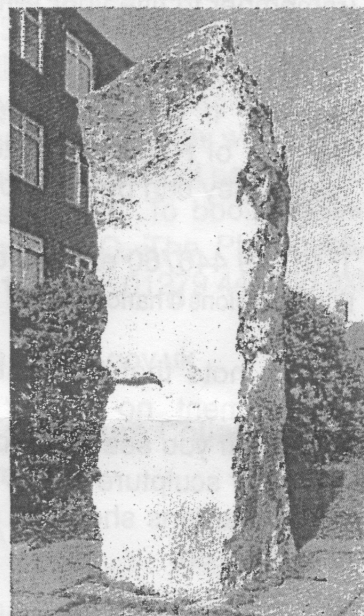
To find these two sculptures takes some searching. The very useful Harlow Sculpture Map will point you in the general direction, but after that I'm afraid you are on your own. Most people need to walk around Hollyfield several times before finding them but the extra effort is well worth it.

The siting of Stone Carvings 1 and 2 is a bit of mystery. They were originally part of a much larger

sculpture and exhibited in a temporary exhibition held at the Water Gardens as part of Harlow Arts Festival in the summer of 1965. It is believed that at the close of the exhibition Kadishman's Stone Carvings (no one quite knows how many) were put in storage. During the building Hollyfield two were moved to this area to be sited, possibly a decision made by the architects responsible for the development. No one knows what happened to the rest of the sculpture.

Kadishman was born in Tel-Aviv in 1932. He studied at the Institute of Arts in Tel-Aviv, St Martin's School

of Art and the Slade School of Fine Art. His awards include the Sainsbury Scholarship in 1961. Group exhibitions include *Young Contemporaries* in London, *Fifty Years of Sculpture* at the Grosvenor Gallery and *Chagall to Kitaj, Jewish Experience in 20<sup>th</sup> Century Art* at the Barbican Art Gallery. Kadishman's work is in many national and international collections including the Tate Gallery, the Art Gallery of Ontario, the Museum of Modern Art in Munich and the Jewish Museum of New York. His early stone works were abstract and minimalist in character. In 1969, he started to make environmental work with trees and embarked on a phase of making conceptual art. At the 1978 Venice Biennale, Kadishman presented himself as a shepherd with a flock of real sheep, reflecting his deep attachment to nature. In the 1980s he returned to making sculpture from sheet metals. The diverse range of his work reflects an affinity with the landscape and culture of Israel and often explores universal themes such as birth and death. Kadishman lives and works in Tel-Aviv.



Stone Carving 2

## Join FHSC Today!

Membership costs £5 for adults, £2 for the unwaged/students and £10 for organisations. Please make cheques payable to Friends of Harlow Sculpture Collection.

Please return this form with your cheque to Simon Carter (Treasurer), c/o Arts Development Office, The Playhouse, Harlow CM20 1LS.

Name.....

Address.....  
.....  
.....

Tel.....

E-Mail.....